



# 10 REASONS to preflight



## enfocub PITSTOP PRO<sup>11</sup>

### PDF PREFLIGHT, AUTO-CORRECTION AND EDITING MADE EASY

PitStop Pro has everything you need for fast and reliable **preflighting and editing of PDF** documents. It not only provides a systematic and thorough detection of all possible problems, it also enables you to **edit and correct** them in a matter of seconds without ever having to leave your familiar Adobe Acrobat environment.

Download a free trial at [www.enfocub.com](http://www.enfocub.com)

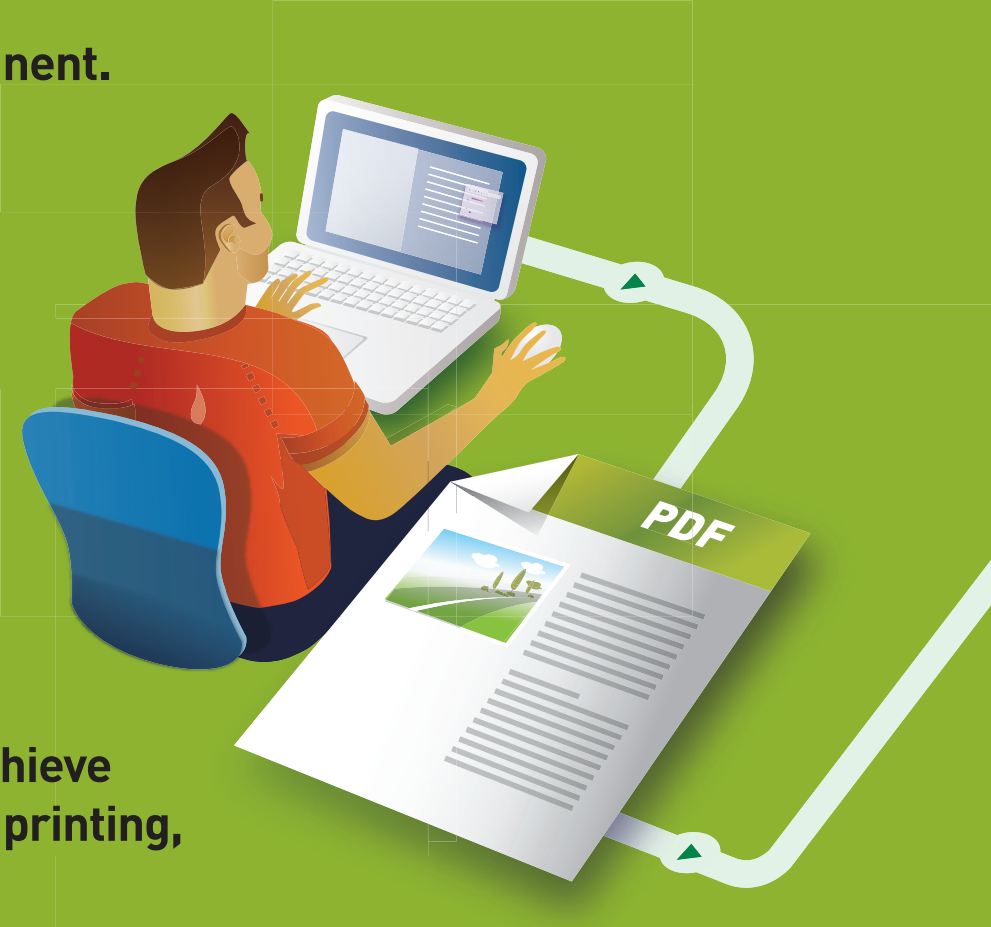
### EASY TO USE PREFLIGHT SETTINGS BASED ON INDUSTRY STANDARDS ...

The PitStop Pro preflight engine contains pre-defined settings to detect typical problems. All settings are based on the current best practices of graphic designers and printers worldwide. Supported standards include the Ghent PDF Workgroup specifications, PDF/X and PDF/A.

### WIDE RANGE OF EDITING TOOLS

**Edit and correct PDF documents fast and easily — because a deadline is always imminent.**

- ✓ Correct text errors
- ✓ Convert colors
- ✓ Move, rotate, and scale objects
- ✓ Renumber pages
- ✓ Apply stamps
- ✓ Insert cover pages
- ✓ ...



### A POWERFUL TOOLBOX

**Standardize and automate procedures to achieve quality PDF files for different purposes like printing, web or even trouble-free viewing on iPad.**

- ✓ **Action Lists:** Create or use pre-defined lists of actions to be taken to fix problems.
- ✓ **Global Changes:** Implement changes throughout your entire document, with a single click.
- ✓ **Preflight Profiles:** Perform multiple quality checks, combined with automatic fixes and detailed reporting.
- ✓ **QuickRuns:** Combine Action Lists, Global Changes and a Preflight Profile to detect and correct reoccurring issues in a matter of seconds.

Upgrade to PitStop 11 at [www.enfocub.com](http://www.enfocub.com)

enfocub  
**smart**  
preflight

## BENEFITS OF PREFLIGHT



Save money  
& time



Let designers  
focus on being  
creative



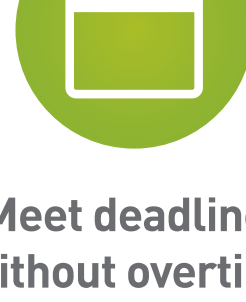
Enable accurate  
production planning



Keep the  
presses running



Speed-up feedback  
to customers &  
improve service



Meet deadlines  
without overtime  
or incurring  
extra costs



Standardize  
processing



MORE  
POWER  
TO YOU



**Enfocub** has the right solutions to guarantee that PDF's flow reliably through production. Our solutions come with award winning **Certified PDF technology** and offer correction of the most common prepress errors.

For more information and free trials go to [www.enfocub.com](http://www.enfocub.com)



# WHY PREFLIGHT?

Preflight PDF files to help you save time and costs, increase customer satisfaction by improving quality control, and allow you to hit deadlines and avoid reprints.

Every day hundreds of thousands of printers, publishers and designers are saving millions and ensuring their quality control by preflighting PDF documents.

Very simply put, **preflight is checking the quality of PDF files** before they get processed. Preflight checks whether the characteristics of those files are in sync with your desired output.

**But why do you need to preflight a PDF file?**

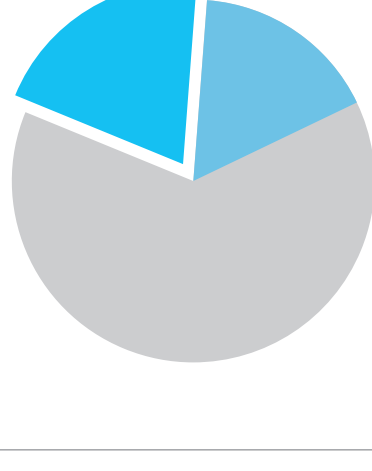
They look mighty good on screen and you can print it on your \$200 printer, why can't it be printed on a \$300,000 press?

And who pays for reprints?



## 20%

of printers don't do ANY KIND of PREFLIGHT

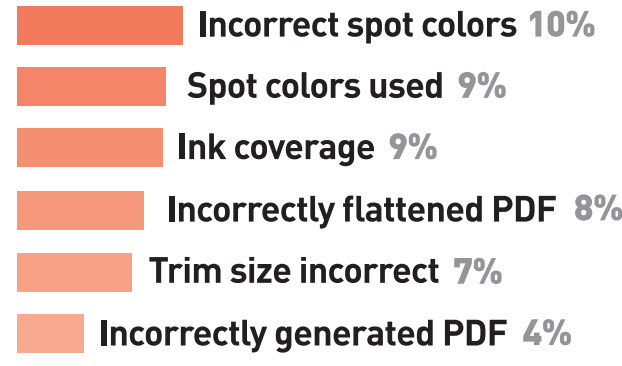
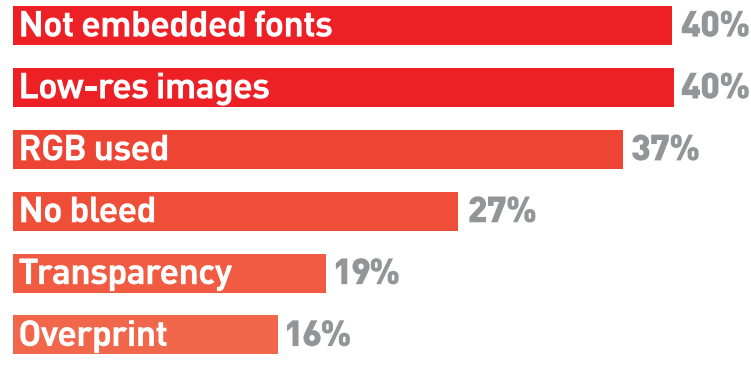


## 24%

from those that do preflight PDF files, state that more than half of the files fail...



## MOST COMMON PROBLEMS



To ensure a PDF is printed as you expect, quality needs to be assured. That sounds like an essential task right?

## 10 REASONS to preflight

10 most common problems in print that you can prevent by preflighting your PDF files!

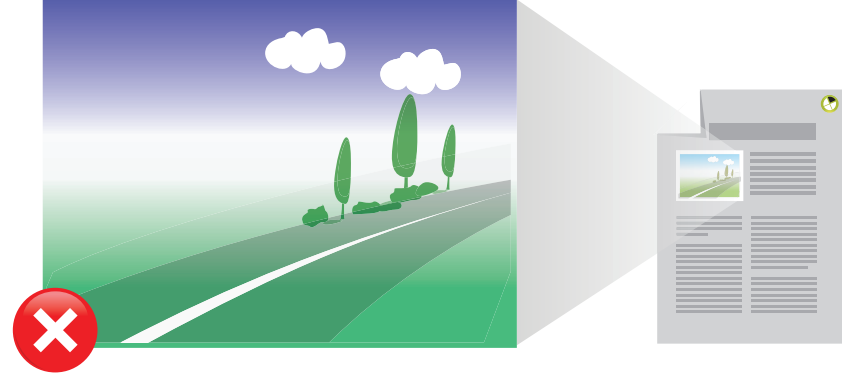
### 1 IMAGE RESOLUTION

For print output, the image resolution needs to be higher than for viewing a PDF on a screen, a general rule of thumb is the resolution should be 2 x your halftone screen ruling. Otherwise you will see jagged edges and artifacts in the image.



### 2 UNINTENDED RGB

Unintended RGB images in PDF files can cause unexpected results after processing. The images could be of low quality, the final printed color could be incorrect and there maybe even be a color shift.



### 3 SPOT COLORS

Most designers like to work with spot colors (e.g. Pantone), especially in logos. But in many cases, **these logos need to be printed using only CMYK inks**, an extra 'dedicated' ink for the spot color is more expensive.

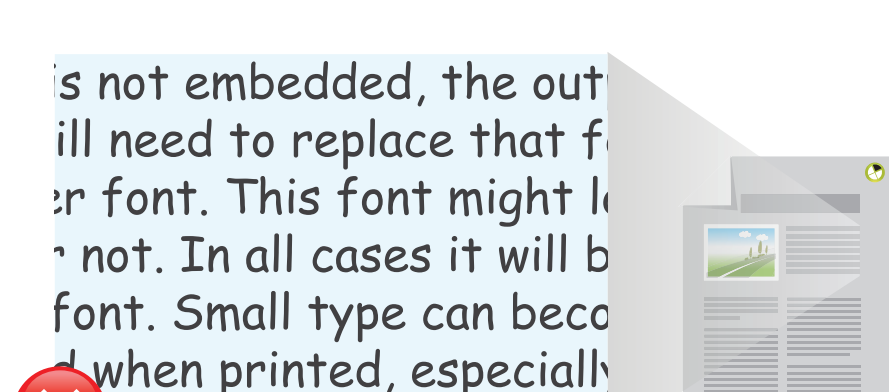


PANTONE → CMYK

### 4 FONT ISSUES

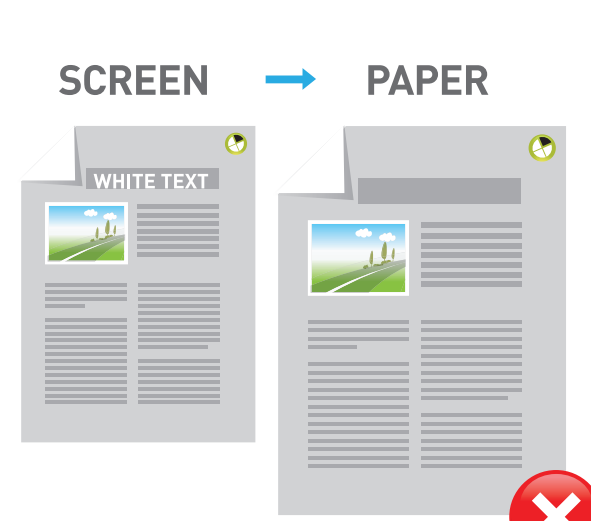
If a font is not embedded, the output equipment will need to replace that font with another font. This font might look similar, or not. In all cases it will be a different font. Small type can become hard to read when printed, especially if it's printed in multiple colors.

Numerous problems can occur with fonts. **E.g. if a font is not embedded, the output equipment will need to replace that font with another font.** This font might look similar, or not. In all cases it will be a different font. Small type can become hard to read when printed, especially if it's printed in multiple colors.



### 5 WHITE ELEMENTS

Ever seen a job where a white element that looks great on the screen or paper proof suddenly disappears when on press? **White elements could be set to "overprint"**, which means that the white ink will be output on top of the inks below and basically disappear. Unless you are in Packaging or use a specific white ink in your production process, the white elements should be set to "knock out".



### 6 DEEP BLACK

How do you define a nice deep ('rich') black, one that won't cause trouble on a printing press? Every company has their own recipe for a nice black. But **a black that carries too much ink can be a problem for some printing methods.** A Black that's too heavy can cause web breaks on a web press and marking or set off.



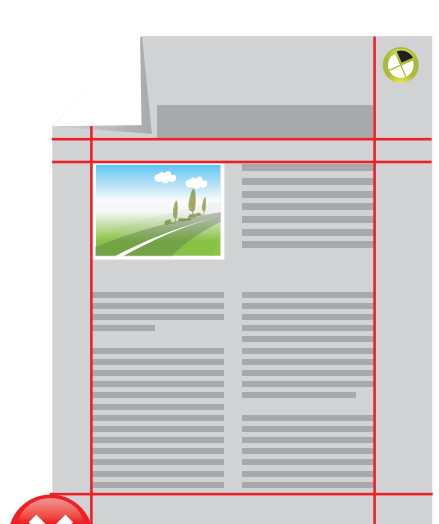
### 7 TRANSPARENCY

Although transparency is now a widely accepted functionality within most design and page layout applications many printing companies are still wary of **PDF files containing transparency** and like to give them **specific care and attention** to ensure they are processed and imaged correctly.



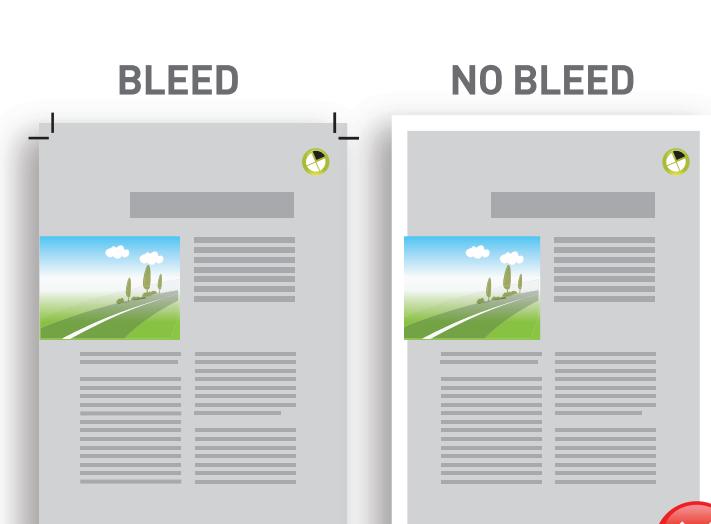
### 8 LAYERS

Layers were introduced with PDF version 1.5. These layers can be visible, or hidden. If your proofer or your RIP doesn't support PDF v1.5 or higher and there are layers in the PDF, they will be placed on top of each other. **If a file contains a hidden layer, which is set to 'Always print', it will be printed.**



### 9 BLEED

If a file that contains images or content that extend to the edge of the page and it contains no or not enough bleed, **white borders can appear** after cutting the sheets.



### 10 INK COVERAGE

Excess ink coverage causes **marking from one sheet to another**, long drying times and increases the risk of spoilage. Wet paper can cause registration issues and can cause you to have to slow the performance of a press to ensure the final printed quality.

