

enfocus PITSTOP SERVER¹¹



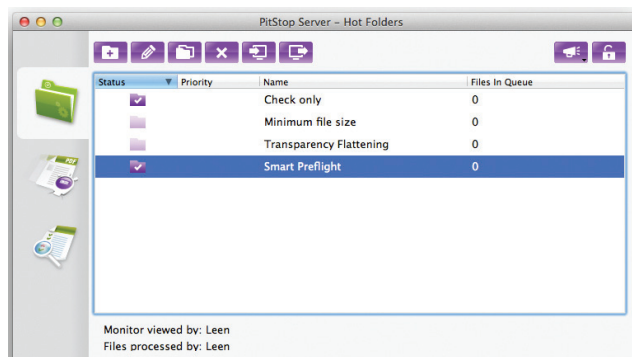
Manual editing tools such as PitStop Pro are amazingly powerful in correcting last-minute problems in PDF files and making them suitable for production. PitStop Server 11 takes that same power to an automated level; using convenient watched folder architecture, it allows you to automate inspection and correction of PDF files.

Automated preflight & correction

PitStop Server automates optimizing and increasing the quality of PDF files for different purposes like printing, web, trouble-free viewing on iPad or even long-term archiving. PitStop Server offers significant opportunities to automate your production processes as it brings editing and correction to the next level without requiring user interaction.

Embed fonts, convert or remap colors, renumber pages, set correct page boxes, apply stamps, insert cover pages, move, rotate, and scale objects — these are just a few of the possibilities. Built-in transparency flattening options allow you to ensure consistent results when outputting to different devices.

An extensive preflight engine enables you to check for potential problems e.g. font problems, low image resolution, color issues, etc. Ink coverage problems can be detected while taking transparency, overprint settings, overlapping items and layers into account. PitStop Server can automatically generate a full preflight report that lists all problems found in your files. You can specify XML or annotated PDF reports as well as the same user-friendly preflight reports created in PitStop Pro.



Preflight and corrections can also be driven by job specific information such as JDF or XML job tickets. Fast and correct linking of the PDF with a customer's job specific requirements makes your service quicker and more accurate. Enfocus gives your company the competitive edge to work smarter and win more business.

Integrate PitStop Server in your workflow

PitStop Server 11 fits seamlessly into **Enfocus Switch** to provide preflighting and auto-correction of PDF files in a more fully automated workflow. Automatically download PDF files from FTP servers or receive them through email, preflight them and notify your customers of problem files — these are only a few of the extended capabilities Switch brings to PitStop Server.

The CLI (command-line interface) included with **PitStop Server 11** allows integration of the preflight and auto-correction capabilities with standard settings wherever needed.

WHAT CUSTOMERS SAY

"We combine Enfocus Switch with PitStop Server to automate the flow of all incoming and outgoing files and check them for color, overlays and fonts etc. This extensive control **saves valuable time and ensures the print-ready PDF files are 100% accurate.**"

Dejan Mladenovic, IT Manager at Hallmark Cards

"Printers immediately noticed the changes— PitStop Server has not only **increased speed and efficiency** when it comes to file management, but it has also ensured the PDF's uniformity and consistency."

Andrea Corsi, Technical Developer
at GlaxoSmithKline



WHAT'S NEW IN PITSTOP SERVER 11?



PitStop Server 11 introduces Smart Preflight & Correction – a flexible way of preflighting and correcting PDF files to their specific production requirements.

smart preflight

Until today, a Preflight Profile could only contain fixed checks and corrections e.g. the resolution of an image must be higher than 300 dpi or the page size should be A4. However, every job is different and comes with its specific order and production requirements.

The current situation requires many different or very general Preflight Profiles that can be used for different types of jobs, but this results in less specific and accurate preflighting and corrections.

Not anymore: fixed preflight settings are a thing of the past! PitStop Server 11 introduces a whole new level of automation: preflight rules can now depend on job and production specific information. For example: it's now possible to check page sizes specifically for every job, to ensure that no more separations are used than what the customer will pay for, and many other custom checks and corrections that previously required manual intervention.

Imagine a **PitStop Server** with just one preflight profile that checks and corrects every incoming job based on its specific job order requirements. Now every job can be checked and corrected in a smart way, with the right values based on the file's own job ticket information.

PitStop Server 11 introduces the concept of 'Variable Sets' – a group of variables to be used when preflighting or correcting PDF files. A variable can point to specific information in an XML or JDF job ticket. A job ticket that arrives with the job will automatically provide the right values to the preflight checks, resulting in an accurate and in-depth preflight result. Variables are also supported by Action Lists allowing specific and powerful correction and editing of PDF files based on the job's requirements.

Fast and correct linking of the PDF with the customers' job specific requirements, makes your service quicker and more accurate. Enfocus gives your company the strength to be more effective and work smarter.

Smarter with Text

The new Find Text Action helps to easily adjust specific text to a new branding style or to ensure that specific text fragments are mentioned such as legal phrasings. Through merging characters and words into single text lines, you avoid problems with overlapping text when reformatting or correcting text fragments afterwards.

Cleaner overview, a better focus

Enfocus has developed a new and streamlined interface to make Preflight Profile editing as easy and obvious as possible in **PitStop Server 11**. The Preflight Profile Editor has been optimized with more logical categories. Now you can add your desired preflight checks and have a visual overview of the checks and corrections that are used in the Preflight Profile.

DID YOU KNOW?

PitStop Server fits seamlessly into Enfocus Switch to provide preflighting and auto-correction of PDF files in a bigger automated workflow.

System requirements

Windows®

Microsoft® Windows® XP SP2 Professional or Home Edition
Microsoft® Windows® 2003 or 2008 Server Standard, Enterprise Edition or R2
Microsoft® Windows® 7 Home Premium, Professional or Ultimate

Macintosh®

Mac OS® X version 10.5, 10.6 & 10.7

Hardware

Minimum 1GB of RAM (2 GB recommended)